



“WORLD SEAFOOD TOWER” FOUR-COURSE SET DINNER

「環球海鮮塔」四道菜晚餐

Available on Mondays and Tuesdays 逢星期一及二供應

每位 **\$558** PER PERSON

Starter + 1 Soup + 1 Main Course + 1 Dessert + 1 Coffee or Tea + Free-flow Beverages
頭盤 + 1 湯 + 1 主菜 + 1 甜品 + 1 咖啡 或 茶 + 無限添飲指定餐飲

STARTER 頭盤

World Seafood Tower

Fresh Seasonal Oysters, Canadian Snow Crab Legs, Sake-marinated Abalones, South China Sea Prawns, French Sea Whelks

環球海鮮塔

新鮮時令生蠔、加拿大雪蟹腳、清酒鮑魚、南中國海蝦、法國海螺

Add-ons 滋味升級

Premium Seasonal Oyster (Additional \$200)

高級時令生蠔 (另加\$200)

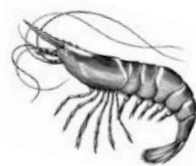
Choice of Premium Seasonal Oysters (4pcs)

自選高級時令生蠔 (四隻)

SOUP 湯

Boston Seafood Chowder Velouté 波士頓海鮮周打湯 [D]

Italian Vegetable Soup 意大利雜菜湯 [V]



MAIN COURSE 主菜

Australian French Cut Lamb Chop (210g) (Additional \$48) [D]

澳洲羊扒 (210 克) (另加\$48)

Seasonal Vegetables, Gravy

時令蔬菜、燒汁

Argentinian Grass-fed Beef Sirloin (160g) [B][D]

阿根廷草飼西冷扒 (160 克)

Seasonal Vegetables, Red Wine Sauce

時令蔬菜、紅酒汁



Scallops and Shrimp Spaghetti with Black Truffle Cream Sauce

黑松露忌廉汁帶子鮮蝦意粉 [D]

Zucchini, Onion

意大利青瓜、洋蔥

Oven Roasted Salmon Fillet 烤焗三文魚柳 [D]

Zucchini, Bell Pepper, Sweet Corn, Red Onion, Couscous, Conpoy Butter Sauce

意大利青瓜、燈籠椒、粟米、紫洋蔥、北非小米、瑤柱牛油汁

[B] – Contains Beef 含牛肉

[D] – Contains Dairy Products 含奶製品

[N] – Contains Nuts 含乾果

[P] – Contains Pork 含豬肉

[V] – Vegetarian 素菜

Price is in HKD and subject to 10% service charge 價目以港幣計算及需另收加一服務費

IMPOSSIBLE™ Burger 2.0 IMPOSSIBLE™ 漢堡 2.0 [V]

Served with Sweet Potato Fries or Green Salad

伴炸番薯條或沙律

Add-ons 滋味升級

Pan-fried Foie Gras (1pc) (Additional \$68)

香煎鵝肝 (1 件) (另加 \$68)

DESSERT 甜品

Coconut Mousse with Mango and Passion Fruit Compote [D]

香芒熱情果椰子慕絲

Cake of the Day (Additional \$48) [D][N]

是日精選蛋糕 (另加\$48)

FREE-FLOW BEVERAGES

無限添飲餐飲

Wine 葡萄酒 Selected Sparkling, White or Red Wine 精選氣泡酒、白酒、紅酒

Sake 清酒 Selected Sake 精選清酒

Mocktail 無酒精雞尾酒 Tropical Paradise
Pineapple Juice, Guava Juice, Grenadine
熱情天堂
菠蘿汁、石榴汁、石榴糖漿

Juice 果汁 Orange Juice 橙汁

PREMIUM FREE-FLOW BEVERAGES (ADDITIONAL \$68)

升級無限添飲餐飲 (另加 \$68)

Wine 葡萄酒 Selected French White or Red Wine
精選法國白酒、紅酒

Draught Beer 生啤 Asahi Draught Beer 朝日生啤

Gin 氈酒 Selected Gin, served with Tonic Water
氈酒配湯力水

[B] – Contains Beef 含牛肉

[D] – Contains Dairy Products 含奶製品

[N] – Contains Nuts 含乾果

[P] – Contains Pork 含豬肉

[V] – Vegetarian 素菜

Price is in HKD and subject to 10% service charge 價目以港幣計算及需另收加一服務費