

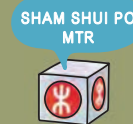
SHAM SHUI PO

Explore historic Sham Shui Po to witness the dramatic transformations that have characterised the history of Kowloon, plus, discover some fantastic local food spots and the most beautiful beads, fabrics and ribbons in town.



TIPS

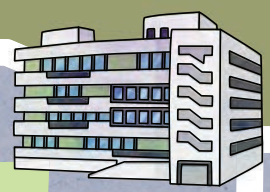
To start your journey, take the MTR to Sham Shui Po Station.



SHEK KIP MEI MTR



SHAM SHUI PO MTR



1. JOCKEY CLUB CREATIVE ARTS CENTRE

ART EXHIBITION | GALLERY | LOCAL DESIGNERS

Arty Party - An arts village providing studio facilities for more than 140 local designers, JCCAC holds various art festivals, crafts fairs, themed exhibitions, stage performances, and cultural workshops all year round.

- 📍 30 Pak Tin Street, Shek Kip Mei
- 🕒 10:00am – 10:00pm
- ☎ (852) 2353 1311

3. LAU SUM KEE NOODLE

HONG KONG-STYLE DINER

Bowled Over - Carrying on a sixty-year tradition, the noodle master at Lau Sum Kee continues to make traditional Cantonese noodles with his own body weight and a 6-foot bamboo stick to retain the authentic flavour and springy texture. The restaurant's homemade pickled radish is a delicious treat while waiting for the noodle dishes to be served.

- 📍 G/F, 48 Kweilin Street, Sham Shui Po
- 🕒 12:00noon – 10:00pm
- ★ Must Try: Shrimp Roe Noodles with Wonton, Pickled Radish
- 💰 Below HK\$50 (US\$6)

5. SHER WONG YIP

HONG KONG-STYLE DINER

Snaking Around - In Chinese culture, snake meat is believed to be a “warm” food that adds “yang” energy to a person's physical makeup. A taste of Sher Wong Yip's delicious snake soup will certainly add a sizzling “kick” to your visit to Hong Kong.

- 📍 G/F, 139 Nam Cheong Street, Sham Shui Po
- 🕒 11:00am – 10:00pm
- ☎ (852) 2728 5600
- ★ Must Try: Snake Soup
- 💰 Below HK\$50 (US\$6)



2. HERITAGE OF MEI HO HOUSE

HISTORICAL BUILDING | OLDEST PUBLIC HOUSING ESTATE

House and Home - Formerly part of Shek Kip Mei Estate, the Heritage of Mei Ho House gives visitors insight into the history of Hong Kong's public housing developments. The donated exhibits and first-hand anecdotes shared by former residents will take you through Shek Kip Mei's history from the 1950s to 1970s.

- 📍 Block 41, Shek Kip Mei Estate, Sham Shui Po
- 🕒 TUE to SUN 09:30am – 05:00pm
Closed on Mondays (except public holidays)
- ☎ (852) 3728 3500
- ★ Public Guide Tour:
Cantonese: 02:30pm – 03:15pm Daily
English: 11:30am – 12:15pm on Alt. Sundays

4. KWAN KEE STORE

LOCAL STREET FOOD

Let Them Eat Cake - Cantonese sponge cake is a childhood favourite for most Hong Kongers and this neighborhood stall has some of the best in town. Now running for more than 50 years, Kwan Kee's secret snack recipes have been passed down for three generations.

- 📍 Shop 10, 115-117 Fuk Wah Street, Sham Shui Po
- 🕒 08:00am – 11:00pm
- ☎ (852) 2360 0328
- ★ Must Try: White Sugar Sponge Cake, Black Sesame Pudding, Red Bean Pudding (砵仔糕)
- 💰 Below HK\$20 (US\$3)



6. APLIU STREET FLEA MARKET

LOCAL MARKET | ELECTRONIC COMPONENTS

What Goes Around - Do you love “treasure hunting”? Unearth bargain-priced new and second-hand products at the open air Apliu Street Flea Market including video and audio equipment, vinyl records and electronic components.

- 📍 Apliu Street, Sham Shui Po
- 🕒 11:00am – 08:00pm



7. YU CHAU STREET

LOCAL MARKET | ACCESSORIES | BEADS

Buttoned Up - A haven for craft lovers and a must-visit for fashion and jewelry designers, Yu Chau Street offers a kaleidoscope of colourful buttons, ribbons, beads, and fabrics.

- 📍 Yu Chau Street, Sham Shui Po
- 🕒 10:00am – 06:00pm

8. TIN HAU TEMPLE

CHINESE TEMPLE

Sight to Sea - Built in the Qing Dynasty, this beautiful temple was created as a place of worship for Matsu, the Chinese mythology sea Goddess known for protecting fishermen and coastal citizens.

- 📍 180-184 Yee Kuk Street, Sham Shui Po
- 🕒 08:00am – 05:00pm